

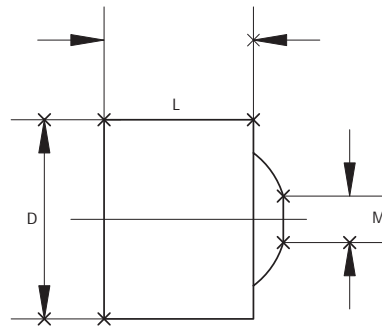
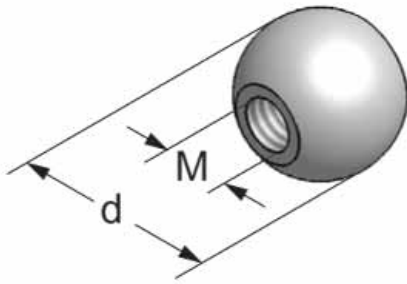
The Kawasaki logo is positioned at the top of the page. It features the word "KAWASAKI" in a bold, black, sans-serif font. The letter "K" is stylized with an orange and black chevron shape integrated into its left side. The background of the entire page is a faded, high-angle photograph of a metal mesh structure, likely a motorcycle's rear wheel or a protective cage, with a dark silhouette of a person in the upper right corner.

**KAWASAKI**

**RICAMBI / SPARE PARTS**

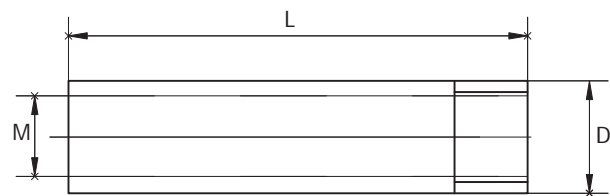
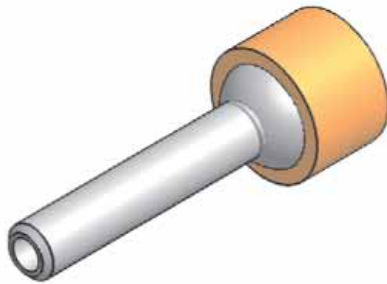


SPRITZDÜSEN BUSE D'ARROSAGE  
COOLANT NOZZLES UGELLO REFRIGERANTE



| Code N.       | D  | L  | M     |
|---------------|----|----|-------|
| PWZ1005D6x4,5 | 6  | 5  | M 2,5 |
| PWZ1008D8x6   | 8  | 6  | M 4   |
| PWZ1008D10x7  | 10 | 7  | M 5   |
| PWZ1012D12x8  | 12 | 8  | M 6   |
| PWZ1014D14x10 | 14 | 9  | M 8   |
| PWZ1016D16x12 | 16 | 10 | M 10  |

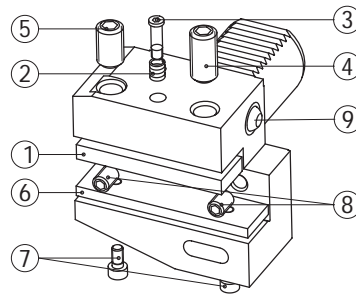
SPRITZROHR RALLONGE POUR BUSE D'ARROSAGE  
EXTENSION FOR COOLANT NOZZLES PROLUNGHE UGELLO REFRIGERANTE



| Code N.   | M    | D   | L  |
|-----------|------|-----|----|
| 833-00150 | M 3  | 1,5 | 25 |
| 833-00151 | M 4  | 1   | 30 |
| 833-00152 | M 4  | 2   | 30 |
| 833-00153 | M 5  | 2   | 30 |
| 833-00154 | M 5  | 3   | 40 |
| 833-00155 | M 6  | 2   | 35 |
| 833-00156 | M 6  | 3   | 35 |
| 833-00157 | M 6  | 4   | 50 |
| 833-00158 | M 8  | 2   | 40 |
| 833-00159 | M 8  | 3   | 40 |
| 833-00160 | M 8  | 4   | 40 |
| 833-00161 | M 8  | 5   | 50 |
| 833-00162 | M 10 | 2   | 40 |
| 833-00163 | M 10 | 4   | 40 |
| 833-00164 | M 10 | 6   | 50 |
| 833-00165 | M 10 | 8   | 50 |

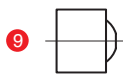
## ERSATZTEILE PIÈCES DETACHÉES SPARE PARTS COMPONENTI

B1- B2 - B3 - B4



| Code N.       | Tool clamp plate | Spring     | Q | Screw      | Q | Locking screw | Q | Locking screw short | Shim plate | Screw      | Q | Stop screw |
|---------------|------------------|------------|---|------------|---|---------------|---|---------------------|------------|------------|---|------------|
|               |                  |            |   |            |   |               |   |                     |            |            |   |            |
| B..-16x12x... | 832-002084       | 824-101010 | 1 | 811-302009 | 1 | 811-402047    | 1 | 811-102019          | -          | -          | - | 811-102020 |
| B..-20x16x... | 832-002003       | 824-101010 | 1 | 811-302004 | 1 | 811-102030    | 1 | 811-102029          | 832-003003 | 811-101016 | 1 | 811-102020 |
| B..-25x16x... | 832-002003       | 824-101010 | 1 | 811-302004 | 1 | 811-102030    | 1 | 811-102029          | 832-003003 | 811-101016 | 1 | 811-102020 |
| B1-30x20x...  | 832-002012       | 824-101010 | 1 | 811-302004 | 1 | 811-102044    | 1 | 811-102043          | 832-003007 | 811-101016 | 1 | 811-102028 |
| B2-30x20x...  | 832-002012       | 824-101010 | 1 | 811-302004 | 1 | 811-102045    | 1 | 811-102044          | 832-003007 | 811-101016 | 1 | 811-102028 |
| B3-30x20x...  | 832-002012       | 824-101010 | 1 | 811-302004 | 1 | 811-102045    | 1 | 811-102044          | 832-003007 | 811-101016 | 1 | 811-102028 |
| B4-30x20x...  | 832-002012       | 824-101010 | 1 | 811-302004 | 1 | 811-102045    | 1 | 811-102044          | 832-003007 | 811-101016 | 1 | 811-102028 |
| B1-40x25x44   | 832-002019       | 824-101010 | 1 | 811-302004 | 1 | 811-102045    | 1 | 811-102044          | 832-003012 | 811-101016 | 2 | 811-102028 |
| B2-40x25x44   | 832-002019       | 824-101010 | 1 | 811-302004 | 1 | 811-102045    | 1 | 811-102044          | 832-003012 | 811-101016 | 2 | 811-102028 |
| B3-40x25x44   | 832-002019       | 824-101010 | 1 | 811-302004 | 1 | 811-102047    | 1 | 811-102045          | 832-003033 | 811-101016 | 2 | 811-102028 |
| B4-40x25x44   | 832-002019       | 824-101010 | 1 | 811-302004 | 1 | 811-102047    | 1 | 811-102045          | 832-003033 | 811-101016 | 2 | 811-102028 |
| B1-50x32x55   | 832-002025       | 824-101010 | 1 | 811-302004 | 1 | 811-102045    | 2 | -                   | 832-003016 | 811-101017 | 2 | 811-102036 |
| B2-50x32x55   | 832-002025       | 824-101010 | 1 | 811-302004 | 1 | 811-102045    | 2 | -                   | 832-003016 | 811-101017 | 2 | 811-102036 |
| B3-50x32x55   | 832-002025       | 824-101010 | 1 | 811-302004 | 1 | 811-102083    | 1 | 811-102047          | 832-003034 | 811-101017 | 2 | 811-102036 |
| B4-50x32x55   | 832-002025       | 824-101010 | 1 | 811-302004 | 1 | 811-102083    | 1 | 811-102047          | 832-003034 | 811-101017 | 2 | 811-102036 |
| B1-60x32x60   | 832-002028       | 824-101020 | 1 | 811-302013 | 1 | 811-102054    | 2 | -                   | 832-003019 | 811-101017 | 2 | 811-102036 |
| B2-60x32x60   | 832-002028       | 824-101020 | 1 | 811-302013 | 1 | 811-102054    | 2 | -                   | 832-003019 | 811-101017 | 2 | 811-102036 |
| B3-60x32x60   | 832-002028       | 824-101020 | 1 | 811-302013 | 1 | 811-102057    | 1 | 811-102054          | 832-003019 | 811-101017 | 2 | 811-102036 |
| B4-60x32x60   | 832-002028       | 824-101020 | 1 | 811-302013 | 1 | 811-102057    | 1 | 811-102054          | 832-003019 | 811-101017 | 2 | 811-102036 |
| B1-80x40x75   | 832-002034       | 824-101020 | 2 | 811-302013 | 2 | 811-102056    | 3 | -                   | 832-003021 | 811-101017 | 2 | 811-102036 |
| B2-80x40x75   | 832-002034       | 824-101020 | 2 | 811-302013 | 2 | 811-102056    | 3 | -                   | 832-003021 | 811-101017 | 2 | 811-102036 |
| B3-80x40x75   | 832-002034       | 824-101020 | 2 | 811-302013 | 2 | 811-102058    | 2 | 811-102056          | 832-003021 | 811-101017 | 2 | 811-102036 |
| B4-80x40x75   | 832-002034       | 824-101020 | 2 | 811-302013 | 2 | 811-102058    | 2 | 811-102056          | 832-003021 | 811-101017 | 2 | 811-102036 |

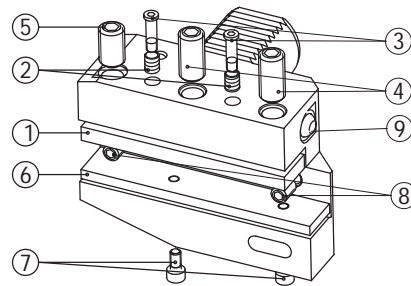
### Code N. Coolant noose



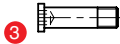
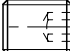
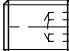
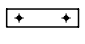
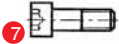
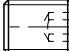


|               |               |
|---------------|---------------|
| B...16x12...  | PWZ1008D8X6   |
| B1-20x16x...  | PWZ1008D10X7  |
| B2-20x16x...  | PWZ1008D10X7  |
| B3-20x16x...  | PWZ1008D10X7  |
| B4-20x16x...  | PWZ1008D10X7  |
| B1-25x16x...  | PWZ1008D10X7  |
| B2-25x16x...  | PWZ1008D10X7  |
| B3-25x16x...  | PWZ1008D10X7  |
| B4-25x16x40   | PWZ1008D10X7  |
| B4-25x16x30   | PWZ1008D10X7  |
| B..-30x20x... | PWZ1012D14X10 |
| B..-40x25x44  | PWZ1012D14X10 |
| B..-50x32x55  | PWZ1012D14X10 |
| B..-60x32x60  | PWZ1012D14X10 |
| B..-80x40x75  | PWZ1012D14X10 |

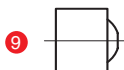
## ERSATZTEILE / PIÈCES DÉTACHÉES SPARE PARTS / COMPONENTI

B5 - B6 - B7 - B8



| Code N.       | Tool clamp plate  | Spring  | Q | Screw   | Q | Locking screw   | Q | Locking screw short  | Shim plate | Screw   | Q | Stop screw  |  |   |
|---------------|---|---|---|---|---|---|---|--|------------|---|---|---|--|---|
|               |  |  |   |  |   |  |   |  |            |  |   |  |  |  |
| B...16x12x... | 832-002051  | 824-101010  | 2 | 811-302009  | 2 | 811-402047  | 2 | 811-102019   | -          | -   | - | 811-102020  |  |   |
| B...20x16x... | 832-002006  | 824-101010  | 2 | 811-302004  | 2 | 811-102030  | 2 | 811-102029   | 832-003005 | 811-101016  | 1 | 811-102020  |  |   |
| B...25x16x... | 832-002006  | 824-101010  | 2 | 811-302004  | 2 | 811-102030  | 2 | 811-102029   | 832-003005 | 811-101016  | 1 | 811-102020  |  |   |
| B5-30x20x...  | 832-002013  | 824-101010  | 2 | 811-302004  | 2 | 811-102044  | 2 | 811-102043   | 832-003009 | 811-101016  | 2 | 811-102028  |  |   |
| B6-30x20x...  | 832-002013  | 824-101010  | 2 | 811-302004  | 2 | 811-102045  | 2 | 811-102044   | 832-003009 | 811-101016  | 1 | 811-102028  |  |   |
| B5-40x25x44   | 832-002021  | 824-101010  | 2 | 811-302004  | 2 | 811-102045  | 2 | 811-102044   | 832-003014 | 811-101016  | 2 | 811-102028  |  |   |
| B6-40x25x44   | 832-002021  | 824-101010  | 2 | 811-302004  | 2 | 811-102047  | 2 | 811-102045   | 832-003014 | 811-101016  | 2 | 811-102028  |  |   |
| B5-50x32x55   | 832-002026  | 824-101010  | 2 | 811-302004  | 2 | 811-102045  | 3 | -  | 832-003018 | 811-101017  | 2 | 811-102036  |  |   |
| B6-50x32x55   | 832-002026  | 824-101010  | 2 | 811-302004  | 2 | 811-102083  | 2 | 811-102047   | 832-003018 | 811-101017  | 2 | 811-102036  |  |   |
| B5-60x32x60   | 832-002029  | 824-101020  | 2 | 811-302013  | 2 | 811-102054  | 3 | -  | 832-003020 | 811-101017  | 2 | 811-102036  |  |   |
| B6-60x32x60   | 832-002029  | 824-101020  | 2 | 811-302013  | 2 | 811-102057  | 2 | 811-102054   | 832-003020 | 811-101017  | 2 | 811-102036  |  |   |
| B5-80x40x75   | 832-002035  | 824-101020  | 2 | 811-302013  | 2 | 811-102056  | 3 | -  | 832-003022 | 811-101017  | 2 | 811-102036  |  |   |
| B6-80x40x75   | 832-002035  | 824-101020  | 2 | 811-302013  | 2 | 811-102058  | 2 | 811-102056   | 832-003022 | 811-101017  | 2 | 811-102036  |  |   |

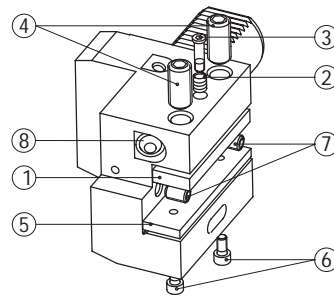
Code N.      Coolant noose

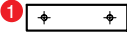

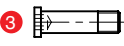
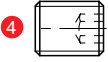
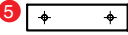
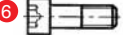
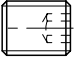


|              |               |
|--------------|---------------|
| B...16x12... | PWZ1008D8X6   |
| B...20x16... | PWZ1008D10X7  |
| B...25x16... | PWZ1008D10X7  |
| B...30x20... | PWZ1012D14X10 |
| B...40x25x44 | PWZ1012D14X10 |
| B...50x32x55 | PWZ1012D14X10 |
| B...60x32x60 | PWZ1012D14X10 |
| B...80x40x75 | PWZ1012D14X10 |

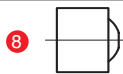
## ERSATZTEILE PIÈCES DÉTACHÉES SPARE PARTS COMPONENTI

C1 - C2 - C3 - C4



| Code N.                        | Tool clamp plate  | Spring  | Q | Screw   | Q | Locking screw   | Q | Shim plate  | Screw   | Q | Stop screw  |
|--------------------------------|---|---|---|---|---|---|---|---|---|---|---|
|                                |  |  |   |  |   |  |   |  |  |   |  |
| C...16x12x44                   | 832-002090  | 824-101010  | 1 | 811-302009  | 1 | 811-402047  | 2 | -   | -   | - | 811-102020  |
| C...20x16x50                   | 832-002004  | 824-101010  | 1 | 811-302004  | 1 | 811-102030  | 2 | 832-003002  | 811-101016  | 1 | 811-102020  |
| C...20x16x55                   | 832-002003  | 824-101010  | 1 | 811-302004  | 1 | 811-102030  | 2 | 832-003003  | 811-101016  | 1 | 811-102020  |
| C...25x16x55                   | 832-002003  | 824-101010  | 1 | 811-302004  | 1 | 811-102030  | 2 | 832-003003  | 811-101016  | 1 | 811-102020  |
| C1-30x20x70<br>C2-30x20x70     | 832-002012  | 824-101010  | 1 | 811-302004  | 1 | 811-102044  | 2 | 832-003007  | 811-101016  | 1 | 811-102028  |
| C1-S-30x20/16<br>C2-S-30x20/16 | 832-002008  | 824-101010  | 1 | 811-302004  | 1 | 811-102044  | 2 | 832-003198  | 811-101016  | 1 | -   |
| C3-30x20x70<br>C4-30x20x70     | 832-002012  | 824-101010  | 1 | 811-302004  | 1 | 811-102045  | 2 | 832-003007  | 811-101016  | 1 | 811-102028  |
| C1-40x25x85<br>C2-40x25x85     | 832-002019  | 824-101010  | 1 | 811-302004  | 1 | 811-102045  | 2 | 832-003012  | 811-101016  | 2 | 811-102028  |
| C1-S40x25/20<br>C2-S40x25/20   | 832-002058  | 824-101010  | 1 | 811-302004  | 1 | 811-102045  | 2 | 832-003200  | 811-101016  | 1 | -   |
| C3-40x25x85<br>C4-40x25x85     | 832-002019  | 824-101010  | 1 | 811-302004  | 1 | 811-102047  | 2 | 832-003012  | 811-101016  | 2 | 811-102028  |
| C1-50x32x100<br>C2-50x32x100   | 832-002025  | 824-101010  | 1 | 811-302004  | 1 | 811-102045  | 2 | 832-003016  | 811-101017  | 2 | 811-102036  |
| C1-S50x32/25<br>C2-S50x32/25   | 832-002066  | 824-101010  | 1 | 811-302004  | 1 | 811-102047  | 2 | 832-003199  | 811-101017  | 2 | -   |
| C3-50x32x100<br>C4-50x32x100   | 832-002025  | 824-101010  | 1 | 811-302004  | 1 | 811-102083  | 2 | 832-003016  | 811-101017  | 2 | 811-102036  |
| C1-60x32x125<br>C2-60x32x125   | 832-002028  | 824-101020  | 1 | 811-302013  | 1 | 811-102054  | 2 | 832-003019  | 811-101017  | 2 | 811-102036  |
| C1-S60x32<br>C2-S60x32         | 832-002160  | 824-101020  | 1 | 811-302013  | 1 | 811-102054  | 2 | -   | -   | - | -   |
| C3-60x32x125<br>C4-60x32x125   | 832-002028  | 824-101020  | 1 | 811-302013  | 1 | 811-102056  | 2 | 832-003019  | 811-101017  | 2 | 811-102036  |
| C1-80x40x160<br>C2-80x40x160   | 832-002036  | 824-101020  | 2 | 811-302013  | 2 | 811-102056  | 3 | 832-003023  | 811-101017  | 2 | 811-102036  |
| C1-S80x40<br>C2-S80x40         | 832-002161  | 824-101020  | 1 | 811-302013  | 1 | 811-102056  | 2 | -   | -   | - | -   |
| C3-80x40x160<br>C4-80x40x160   | 832-002036  | 824-101020  | 2 | 811-302013  | 2 | 811-102058  | 3 | 832-003023  | 811-101017  | 2 | 811-102036  |

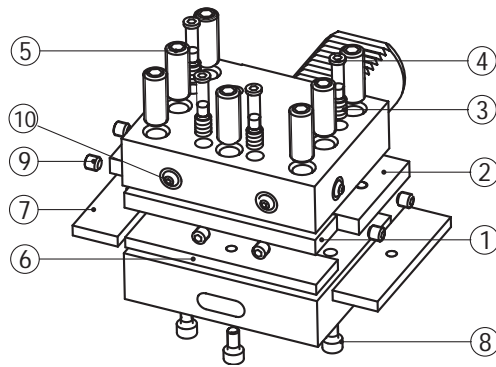
### Code N. Coolant noose



|               |               |
|---------------|---------------|
| C...16x12x... | PWZ1005D6X4,5 |
| C...20x16x... | PWZ1008D10X7  |
| C...25x16x... | PWZ1008D10X7  |
| C...30x20x... | PWZ1012D14X10 |
| C...40x25x... | PWZ1012D14X10 |
| C...50x32x... | PWZ1012D14X10 |
| C...60x32x... | PWZ1012D14X10 |
| C...80x40x... | PWZ1012D14X10 |

## ERSATZTEILE / PIECES DETACHEES SPARE PARTS / COMPONENTI

D1-D2



| Code N.      | Tool clamp plate (rad) | Tool clamp plate (ax) | Spring     | Q | Screw      | Q | Locking screw | Q | Shim plate (rad) | Shim plate (ax) | Screw      | Q | Stop screw |
|--------------|------------------------|-----------------------|------------|---|------------|---|---------------|---|------------------|-----------------|------------|---|------------|
|              |                        |                       |            |   |            |   |               |   |                  |                 |            |   |            |
| D.-25x16x48  | 832-002136             | 832-002098            | 824-101010 | 3 | 811-302004 | 3 | 811-102030    | 6 | 832-003004       | 832-003179      | 811-101016 | 3 | 811-102011 |
| D.-30x20x60  | 832-002118             | 832-002009            | 824-101010 | 4 | 811-302004 | 4 | 811-102030    | 7 | 832-003008       | 832-003006      | 811-101016 | 3 | 811-102017 |
| D1-40x25x72  | 832-002119             | 832-002015            | 824-101010 | 4 | 811-302004 | 4 | 811-102039    | 7 | 832-003013       | 832-003010      | 811-101016 | 3 | 811-102017 |
| D2-40x25x72  | 832-002119             | 832-002015            | 824-101010 | 4 | 811-302004 | 4 | 811-102041    | 7 | 832-003013       | 832-003010      | 811-101016 | 3 | 811-102017 |
| D1-50x32x85  | 832-002120             | 832-002023            | 824-101010 | 4 | 811-302004 | 4 | 811-102039    | 7 | 832-003017       | 832-003015      | 811-101017 | 3 | 811-102026 |
| D2-50x32x85  | 832-002120             | 832-002023            | 824-101010 | 4 | 811-302004 | 4 | 811-102041    | 7 | 832-003017       | 832-003015      | 811-101017 | 3 | 811-102026 |
| D1-60x32x110 | 832-002134             | 832-002071            | 824-101020 | 4 | 811-302013 | 4 | 811-102047    | 7 | 832-003025       | 832-003024      | 811-101017 | 6 | 811-102026 |
| D2-60x32x110 | 832-002134             | 832-002071            | 824-101020 | 4 | 811-302013 | 4 | 811-102083    | 7 | 832-003025       | 832-003024      | 811-101017 | 6 | 811-102026 |
| D1-80x40x140 | 832-002135             | 832-002033            | 824-101020 | 4 | 811-302013 | 4 | 811-102056    | 7 | 832-003093       | 832-003092      | 811-101017 | 6 | 811-102026 |
| D2-80x40x140 | 832-002135             | 832-002033            | 824-101020 | 4 | 811-302013 | 4 | 811-102058    | 7 | 832-003093       | 832-003092      | 811-101017 | 6 | 811-102026 |

Code N.

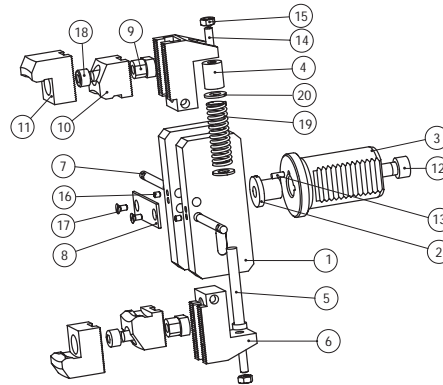
Coolant noose



|              |              |
|--------------|--------------|
| D.-25x16x48  | PWZ1008D8X6  |
| D.-30x20x60  | PWZ1008D8X6  |
| D.-40x25x72  | PWZ1008D10X7 |
| D.-50x32x85  | PWZ1008D10X7 |
| D.-60x32x85  | PWZ1012D12X8 |
| D.-80x40x140 | PWZ1012D12X8 |

## ERSATZTEILE    PIÈCES DETACHÉES SPARE PARTS    COMPONENTI

HK1

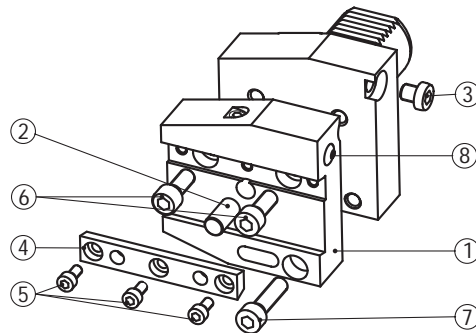


| Code N. | Body       | Threaded pawl | Shank    | Pawl       | Pin        | Jaw base   | Pin        | Plate      | Die slide  | Short jaw   | Long jaw    |
|---------|------------|---------------|----------|------------|------------|------------|------------|------------|------------|-------------|-------------|
|         | 1          | 2             | 3        | 4          | 5          | 6          | 7          | 8          | 9          | 10          | 11          |
| H116K   | H1-1x20    | H1-2x16       | H1-3x16  | H1-4x20-30 | H1-5x30    | H1-6x30    | H1-7x30    | H1-8x30    | H1-9x30-40 | H1-10x30-40 | H1-11x30-40 |
| H120K   | H1-1x20    | H1-2x20       | H1-3x20  | H1-4x20-30 | H1-5x30    | H1-6x30    | H1-7x30    | H1-8x30    | H1-9x30-40 | H1-10x30-40 | H1-11x30-40 |
| H125K   | H1-1x30    | H1-2x30-40    | H1-3x25  | H1-4x20-30 | H1-5x30    | H1-6x30    | H1-7x30    | H1-8x30    | H1-9x30-40 | H1-10x30-40 | H1-11x30-40 |
| H125KC  | H1-1x30    | H1-2x30-40    | H1-3x25C | H1-4x20-30 | H1-5x30    | H1-6x30    | H1-7x30    | H1-8x30    | H1-9x30-40 | H1-10x30-40 | H1-11x30-40 |
| H130K   | H1-1x30    | H1-2x30-40    | H1-3x30  | H1-4x20-30 | H1-5x30    | H1-6x30    | H1-7x30    | H1-8x30    | H1-9x30-40 | H1-10x30-40 | H1-11x30-40 |
| H132KC  | H1-1x30    | H1-2x30-40    | H1-3x32C | H1-4x20-30 | H1-5x30    | H1-6x30    | H1-7x30    | H1-8x30    | H1-9x30-40 | H1-10x30-40 | H1-11x30-40 |
| H140K   | H1-1x40    | H1-2x30-40    | H1-3x40  | H1-4x40    | H1-5x40    | H1-6x40    | H1-7x40    | H1-8x40    | H1-9x30-40 | H1-10x30-40 | H1-11x30-40 |
| H140KC  | H1-1x40    | H1-2x30-40    | H1-3x40C | H1-4x40    | H1-5x40    | H1-6x40    | H1-7x40    | H1-8x40    | H1-9x30-40 | H1-10x30-40 | H1-11x30-40 |
| H150K   | H1-1x50-60 | H1-2x50-60    | H1-3x50  | H1-4x50-60 | H1-5x50-60 | H1-6x50-60 | H1-7x50-60 | H1-8x50-60 | H1-9x50-60 | H1-10x50-60 | H1-11x50-60 |
| H150KC  | H1-1x50-60 | H1-2x50-60    | H1-3x50C | H1-4x50-60 | H1-5x50-60 | H1-6x50-60 | H1-7x50-60 | H1-8x50-60 | H1-9x50-60 | H1-10x50-60 | H1-11x50-60 |
| H160K   | H1-1x50-60 | H1-2x50-60    | H1-3x60  | H1-4x50-60 | H1-5x50-60 | H1-6x50-60 | H1-7x50-60 | H1-8x50-60 | H1-9x50-60 | H1-10x50-60 | H1-11x50-60 |

| Code N. | Screw      | Pin        | Screw      | Nut        | Screw      | Screw      | Screw      | Spring     | Washer     |
|---------|------------|------------|------------|------------|------------|------------|------------|------------|------------|
|         | 12         | 13         | 14         | 15         | 16         | 17         | 18         | 19         | 20         |
| H116K   | 811-401041 | 815-210090 | 811-102022 | 812-101004 | 811-102002 | 811-108006 | 811-101040 | 824-101050 | 813-101090 |
| H120K   | 811-401111 | 815-210090 | 811-102022 | 812-101004 | 811-102002 | 811-108006 | 811-101040 | 824-101050 | 813-101090 |
| H125K   | 811-101055 | 815-210090 | 811-102022 | 812-101004 | 811-102002 | 811-108006 | 811-101040 | 824-101050 | 813-101090 |
| H125KC  | 811-101055 | 815-210090 | 811-102022 | 812-101004 | 811-102002 | 811-108006 | 811-101040 | 824-101050 | 813-101090 |
| H130K   | 811-101055 | 815-210090 | 811-102022 | 812-101004 | 811-102002 | 811-108006 | 811-101040 | 824-101050 | 813-101090 |
| H132KC  | 811-101055 | 815-210090 | 811-102022 | 812-101004 | 811-102002 | 811-108006 | 811-101040 | 824-101050 | 813-101090 |
| H140K   | 811-101055 | 815-210090 | 811-102022 | 812-101004 | 811-102002 | 811-108006 | 811-101040 | 824-101060 | 813-101090 |
| H140KC  | 811-101055 | 815-210090 | 811-102022 | 812-101004 | 811-102002 | 811-108006 | 811-101040 | 824-101060 | 813-101090 |
| H150K   | 811-101068 | 815-210180 | 811-102030 | 812-101005 | 811-102002 | 811-108006 | 811-101052 | 824-101120 | 813-101100 |
| H150KC  | 811-101068 | 815-210180 | 811-102030 | 812-101005 | 811-102002 | 811-108006 | 811-101052 | 824-101120 | 813-101100 |
| H160K   | 811-101068 | 815-210180 | 811-102030 | 812-101005 | 811-102002 | 811-108006 | 811-101052 | 824-101120 | 813-101100 |

## ERSATZTEILE / PIECES DETACHEES SPARE PARTS / COMPONENTI

AR-AL-ARU-ALU



| Code N. | Tool holder plate | Pin        | Stop screw | Tool clamping | Screw      | Screw      | Screw      | Coolant noose |
|---------|-------------------|------------|------------|---------------|------------|------------|------------|---------------|
|         | 1                 | 2          | 3          | 4             | 5          | 6          | 7          | 8             |
| AR2026  | 117-120101        | 815-210010 | 811-303103 | 832-002097    | 811-101016 | 811-101029 | 811-101031 | PWZ1008D8X6   |
| AL2026  | 117-220101        | 815-210010 | 811-303103 | 832-002097    | 811-101016 | 811-101029 | 811-101031 | PWZ1008D8X6   |
| AR2526  | 117-125101        | 815-210010 | 811-303103 | 832-002097    | 811-101016 | 811-101029 | 811-101031 | PWZ1008D8X6   |
| AL2526  | 117-225101        | 815-210010 | 811-303103 | 832-002097    | 811-101016 | 811-101029 | 811-101031 | PWZ1008D8X6   |
| ARU2526 | 117-325101        | 815-210010 | 811-303103 | 832-002145    | 811-101016 | 811-101029 | 811-101031 | PWZ1008D8X6   |
| ALU2526 | 117-425101        | 815-210010 | 811-303125 | 832-002145    | 811-101016 | 811-101029 | 811-101031 | PWZ1008D8X6   |
| AR3026  | 117-130101        | 815-210010 | 811-303011 | 832-002037    | 811-101016 | 811-101040 | 811-101042 | PWZ1008D10X7  |
| AL3026  | 117-230101        | 815-210010 | 811-303011 | 832-002037    | 811-101016 | 811-101040 | 811-101042 | PWZ1008D10X7  |
| ARU3026 | 117-330101        | 815-210010 | 811-303011 | 832-002037    | 811-101016 | 811-101040 | 811-101042 | PWZ1008D10X7  |
| ALU3026 | 117-430101        | 815-210010 | 811-303011 | 832-002037    | 811-101016 | 811-101040 | 811-101042 | PWZ1008D10X7  |
| AR4026  | 117-140101        | 815-210020 | 811-303011 | 832-002038    | 811-101016 | 811-101040 | 811-101042 | PWZ1008D10X7  |
| AL4026  | 117-240101        | 815-210020 | 811-303011 | 832-002038    | 811-101016 | 811-101040 | 811-101042 | PWZ1008D10X7  |
| ARU4026 | 117-340101        | 815-210020 | 811-303011 | 832-002038    | 811-101016 | 811-101040 | 811-101042 | PWZ1008D10X7  |
| ALU4026 | 117-440101        | 815-210020 | 811-303011 | 832-002038    | 811-101016 | 811-101040 | 811-101042 | PWZ1008D10X7  |
| AR4032  | 117-140111        | 815-210020 | 811-303011 | 832-002039    | 811-101016 | 811-101040 | 811-101042 | PWZ1008D10X7  |
| AL4032  | 117-240111        | 815-210020 | 811-303011 | 832-002039    | 811-101016 | 811-101040 | 811-101042 | PWZ1008D10X7  |
| ARU4032 | 117-340111        | 815-210020 | 811-303011 | 832-002039    | 811-101016 | 811-101040 | 811-101042 | PWZ1008D10X7  |
| ALU4032 | 117-440111        | 815-210020 | 811-303011 | 832-002039    | 811-101016 | 811-101040 | 811-101042 | PWZ1008D10X7  |
| AR5026  | 117-150101        | 815-210020 | 811-303011 | 832-002040    | 811-101027 | 811-101040 | 811-101042 | PWZ1012D14X10 |
| AL5026  | 117-250101        | 815-210020 | 811-303011 | 832-002040    | 811-101027 | 811-101040 | 811-101042 | PWZ1012D14X10 |
| ARU5026 | 117-350101        | 815-210020 | 811-303011 | 832-002040    | 811-101027 | 811-101040 | 811-101042 | PWZ1012D14X10 |
| ALU5026 | 117-450101        | 815-210020 | 811-303011 | 832-002040    | 811-101027 | 811-101040 | 811-101042 | PWZ1012D14X10 |
| AR5032  | 117-150111        | 815-210020 | 811-303011 | 832-002041    | 811-101027 | 811-101040 | 811-101042 | PWZ1012D14X10 |
| AL5032  | 117-250111        | 815-210020 | 811-303011 | 832-002041    | 811-101027 | 811-101040 | 811-101042 | PWZ1012D14X10 |
| ARU5032 | 117-350111        | 815-210020 | 811-303011 | 832-002041    | 811-101027 | 811-101040 | 811-101042 | PWZ1012D14X10 |
| ALU5032 | 117-450111        | 815-210020 | 811-303011 | 832-002041    | 811-101027 | 811-101040 | 811-101042 | PWZ1012D14X10 |
| AR6032  | 117-160101        | 815-210030 | 811-303012 | 832-002042    | 811-101027 | 811-101052 | 811-101054 | PWZ1012D14X10 |
| AL6032  | 117-260101        | 815-210030 | 811-303012 | 832-002042    | 811-101027 | 811-101052 | 811-101054 | PWZ1012D14X10 |
| ARU6032 | 117-360101        | 815-210030 | 811-303012 | 832-002042    | 811-101027 | 811-101052 | 811-101054 | PWZ1012D14X10 |
| ALU6032 | 117-460101        | 815-210030 | 811-303012 | 832-002042    | 811-101027 | 811-101052 | 811-101054 | PWZ1012D14X10 |